

*Installation:
standard workshop procedure
ensures durability and reliability*



Use the template cross-hairs (narrow end to front of car) to determine AeroCatch and stud strike positions.



After marking AeroCatch and stud strike positioning, cut out shape from panel.



Mark and drill out fixing holes. Use AeroCatch as template (or supplied drawings – stud strike as datum point).



Prepare stud fixing holes. Aim to have stud at 90° to housing (±5° tolerance allows for misalignment).

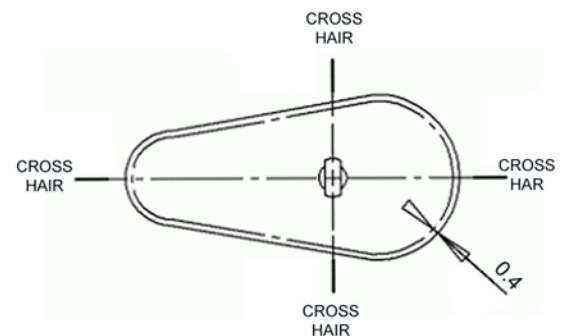
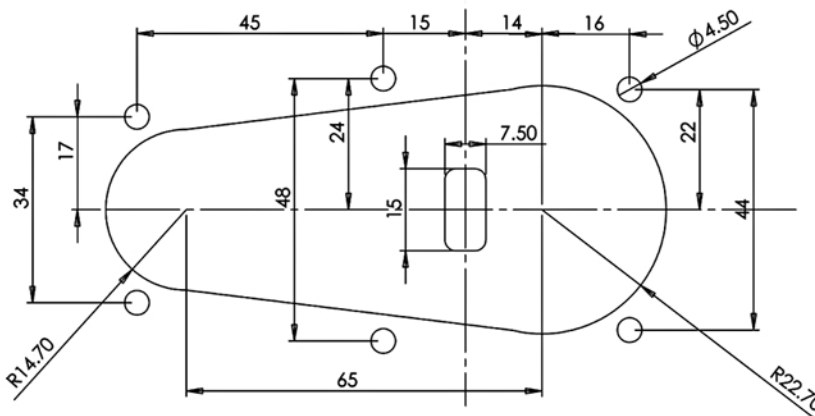


Attach stud and bump stops. Note: stud and AeroCatch axis must be at right angles to ensure smooth operation.



Fix AeroCatch into position. Any small radius on the bonnet may be fared round with silicone.

Photos and installation courtesy of David Kynaston: www.a3motorsport.com



PANEL CUTTING GUIDE
(NOT TO SCALE) PANEL CUTTING TEMPLATE
SUPPLIED WITH KIT.

N.B: REMEMBER TO ADJUST THE CUT-OUT BY 0.4MM FOR THE FLUSH SERIES